

Proposal for a Community Growing Garden

KCC Meeting 11th January 2021

Back story

- Summer 2020 WDC's draft Food Growing Strategy released
- Community Empowerment (Scotland) Act 2015
 - Delivering national outcomes defined in National Performance Framework
 - NPF aligned with United Nations Sustainable Development Goals
 - Local Authority's given targets inc. Food Growing
- COVID-19
 - Supermarket supplies limited
 - Increased interest in home growing for fruit and veg
 - Not everyone has a garden of course
- Climate Challenges and Environmental focus high on agendas
 - Localism e.g. NeighbourFood connecting consumers to local producers
- The Act focuses on LA's provision of Allotments but other communities are providing innovative solutions and for sure, interest in growing is growing.

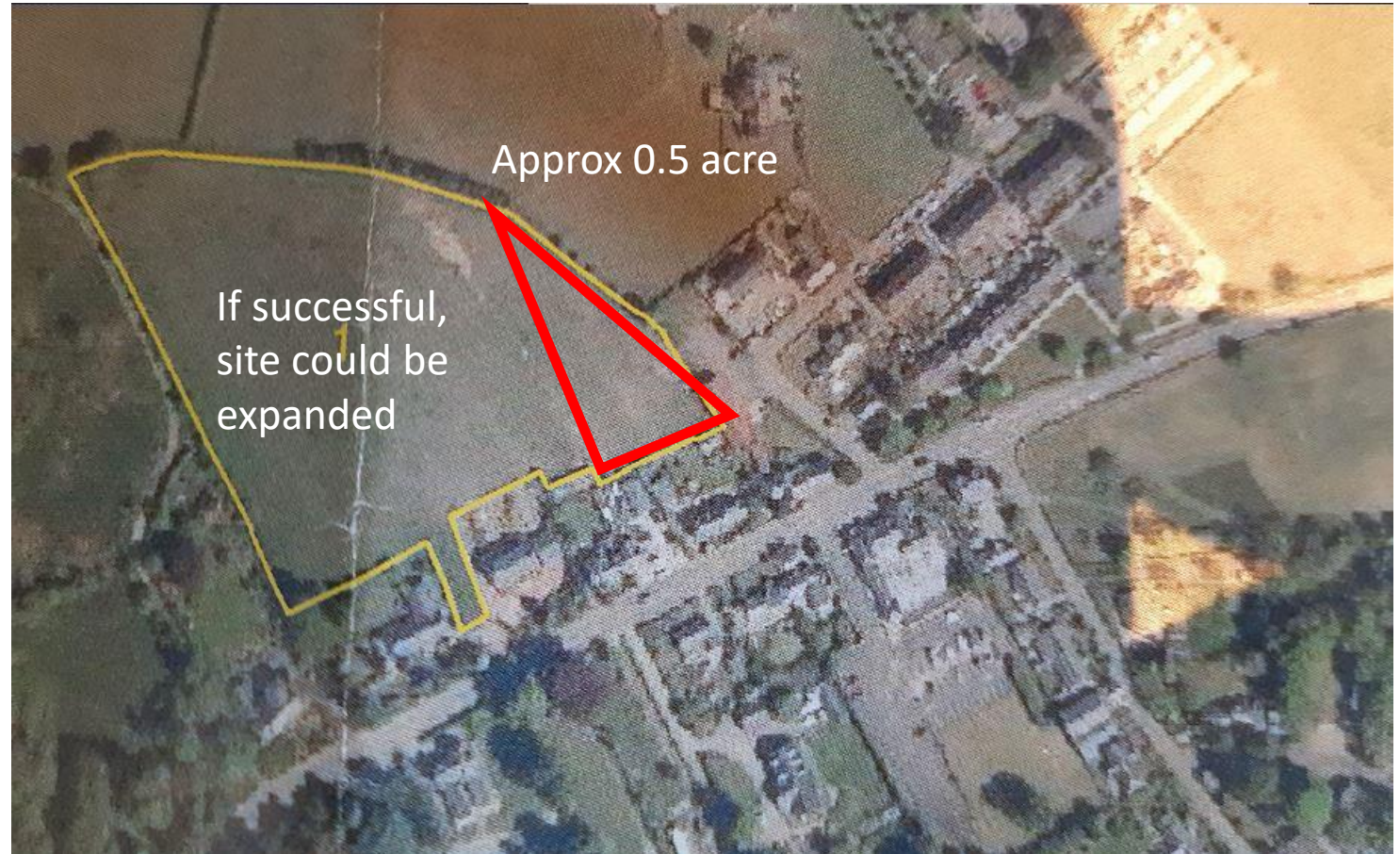
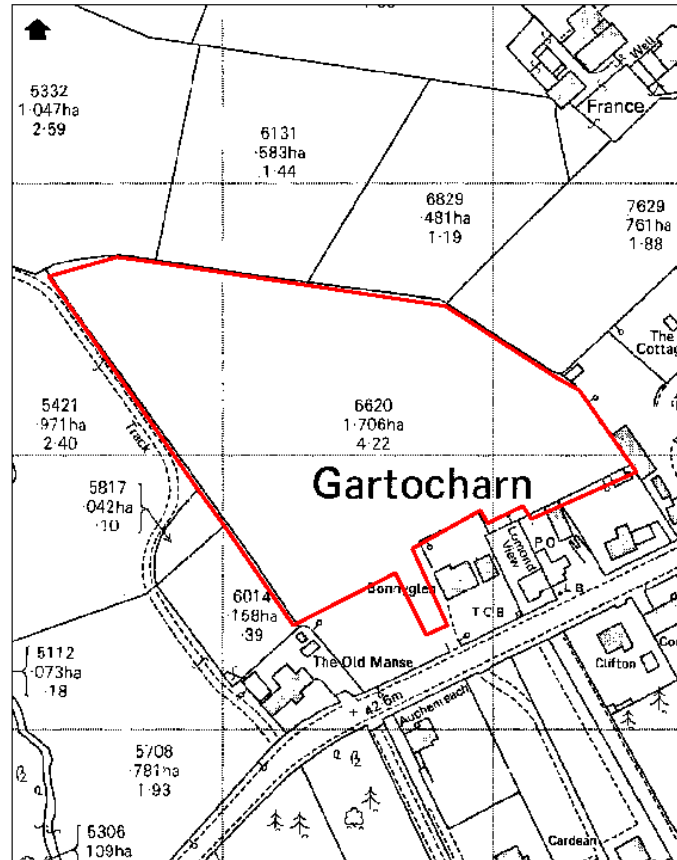


Privately owned site offered

West Dunbartonshire Council

Title : 1950 - 1980

Map No : Map Ref : NS4286SE Reproduced by permission of Ordnance Survey on behalf of HMSO
Date : 12/10/2020 Scale : 1:1250 (C) Crown Copyright and database right 2019. All rights reserved.
West Dunbartonshire Council Licence No. 100020790.



Options to discuss

- Local use versus wider community
- Food, horticulture, orchard
- Bees, birds, butterflies, wildflowers – “sensory”
- Green space



Constraints

- Access considerations – safety, security, capacity and unintrusive
- Facilities will need careful thought
- Must be visually appealing



Bonus Synergies with CAP*

- Addition of 'green' parking spaces
 - Environmentally friendly hardstanding (fully removable if needed)
 - Electrical vehicle charging points
 - Local use outside 'gardening hours'
- Provision of toilet facilities for public use as much as gardeners
- Reintroduction of a village recycling collection point

*Community Action Plan

Route map

- Identify local appetite & demand (wider area demand already known)
 - Consultation
- Garner community support (for an agreed vision)
 - Consultation
- Form society/organisation (to progress the project)
 - Enthusiastic volunteers needed
- Allotments model via WDC easy to implement and run – long term lease arrangement needed.
- Community run gardens overall more demanding but benefits stay in the community – start up assistance is available
- [Waiting to see what these models might involve \(Grow G63 or Grow West Dunbartonshire\). Not contacted Helensburgh Horticultural Society yet.](#)